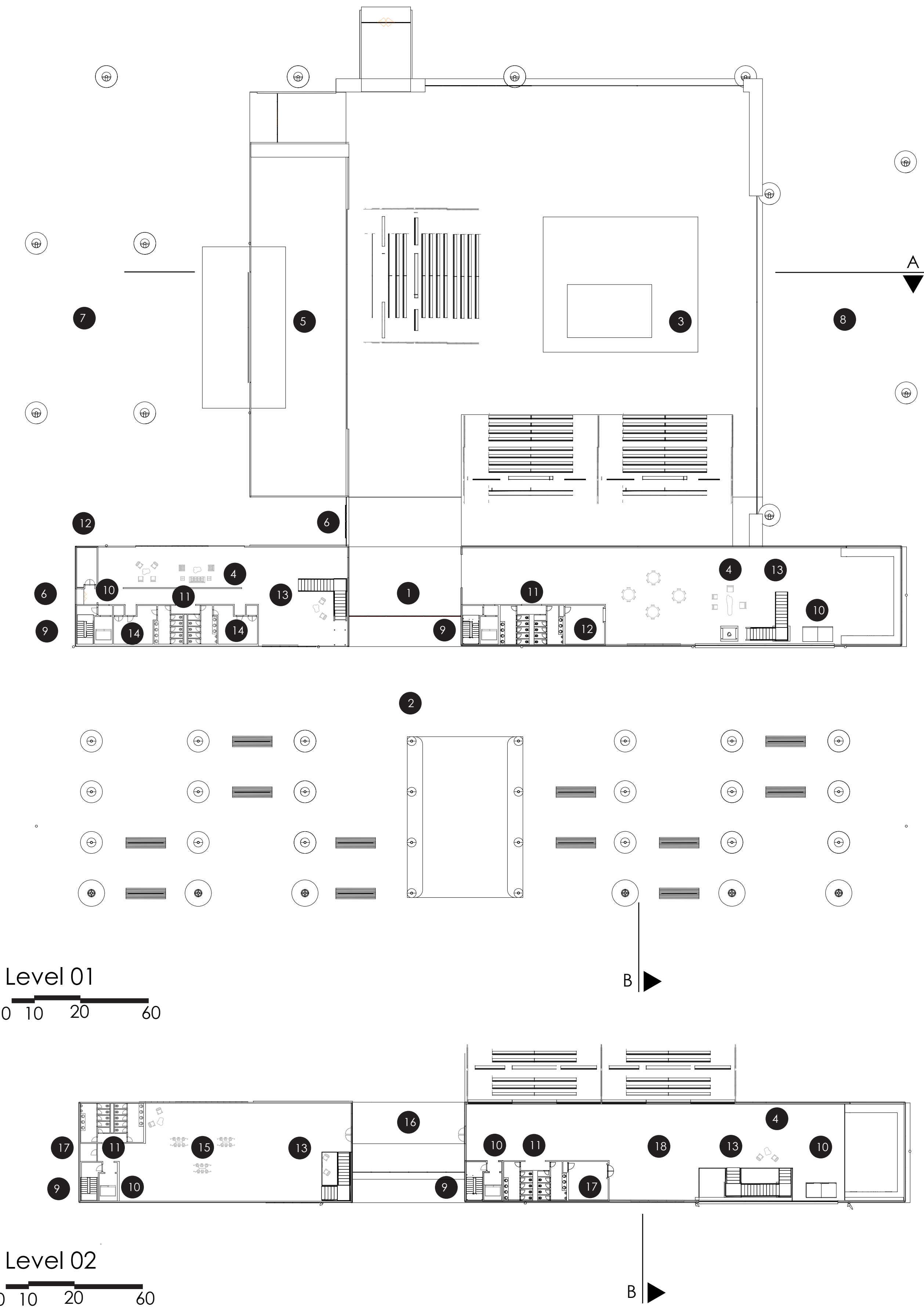
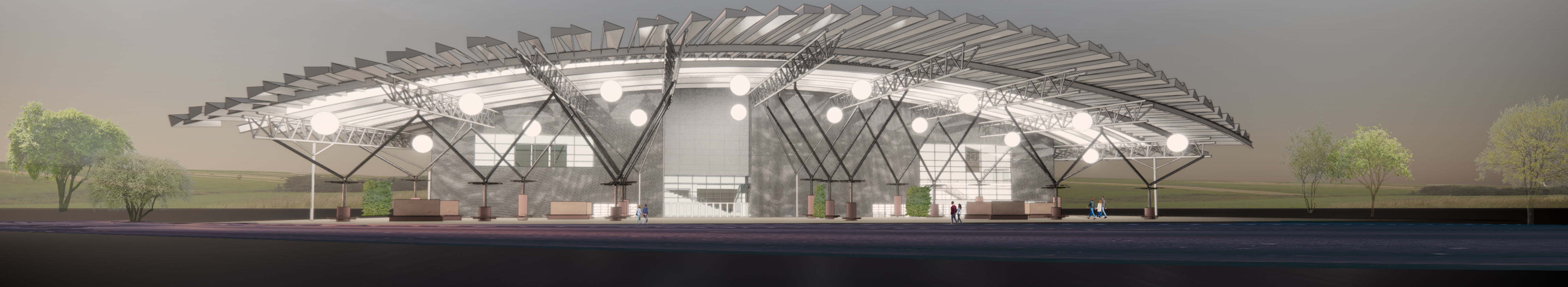


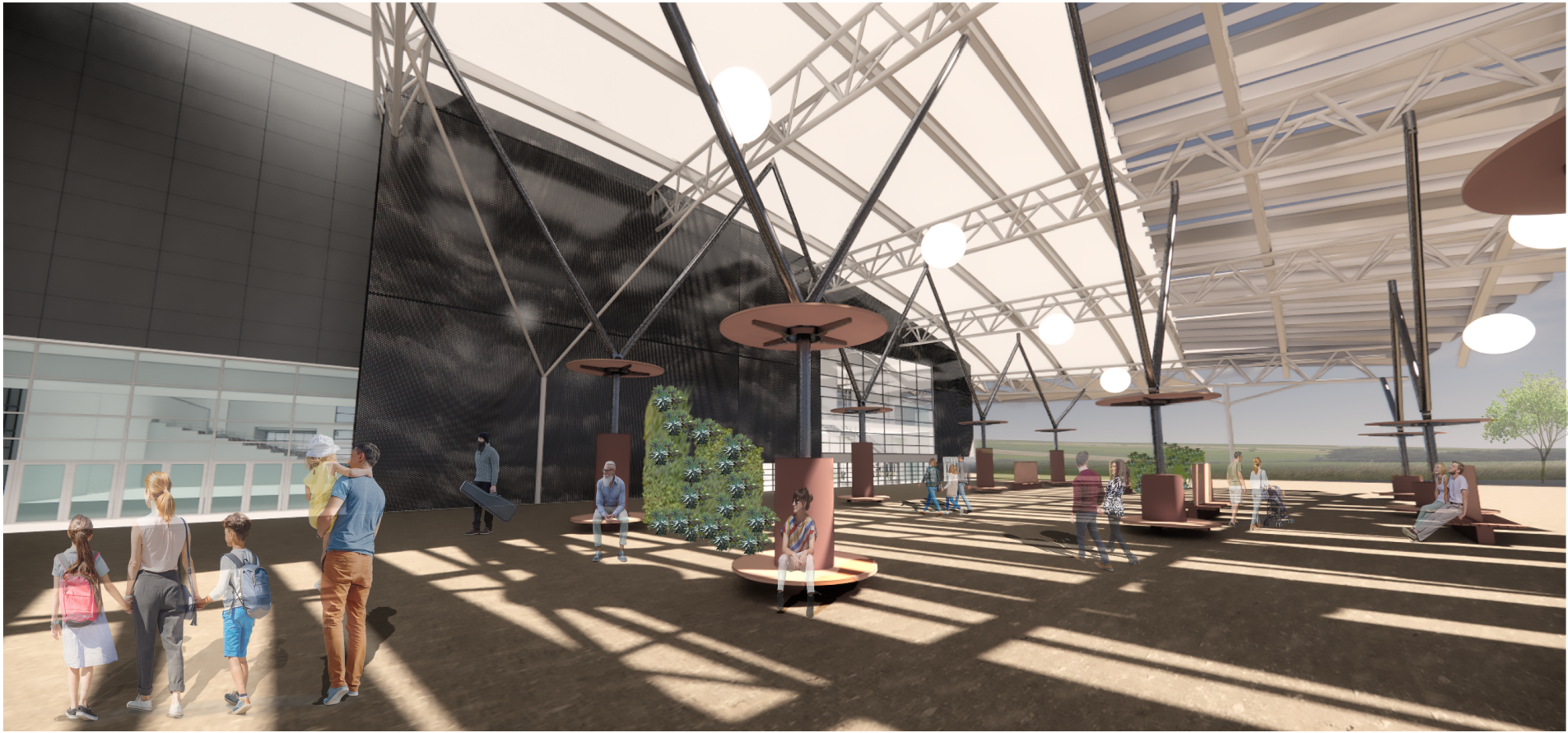
In Time: A Performance Pavilion for Reconnecting and Sharing Experience

The 2020 Interdisciplinary project provides an opportunity to unite our experiences and share our stories through an expression of first-person accounts in poetry, music, space, and art to create an archive of this time in history. The character of this performance pavilion will respond to the shared sentiments of UTSA students through their expressions of isolation, loss of connection and camaraderie with friends and family, loss of loved ones to Covid, and loss of jobs. Designed by: Janay Blancarte O’Leary + Guadalupe Estrada



This space will create a meeting place to encourage congregation and socialization after the global pandemic has subsided. It will promote health both in body and mind through the use of flexible spaces with movable and expandable elements such as walls, windows, stage, and seating areas to accommodate uses and allow for natural ventilation. Density of occupied space will be limited by creating areas separated by structural barriers as well as natural barriers such as vertical gardens.

KEY	
1	Main Entrance
2	Open Air Lobby
3	Main Auditorium
4	Lounge Area
5	Secondary Auditorium
6	Secondary Entrance/Exit
7	Outdoor Stage Area
8	Outdoor Venue Space
9	Fire Escape Stairs
10	Elevators
11	Restrooms
12	Mechanical Room
13	Public Stairs
14	Dressing Rooms
15	Private Meeting Space
16	Sound and Lighting Room
17	Storage
18	Open Performance Space
19	Sublevel space that houses Spiralift system that moves stage and seating into place.



View of Main Entrance and Shading Device



View of Interior

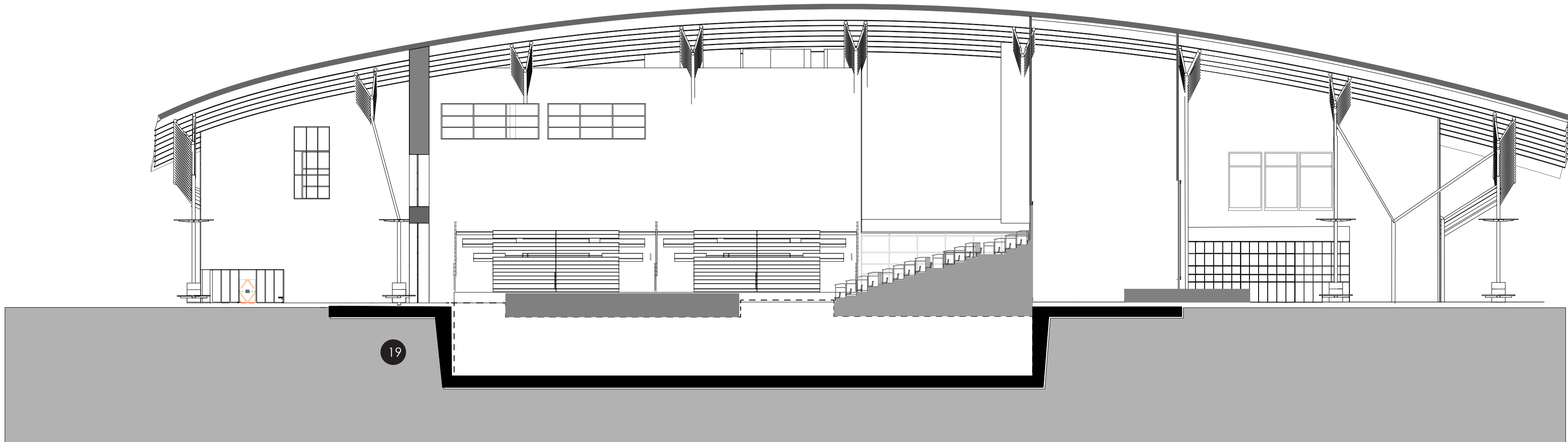
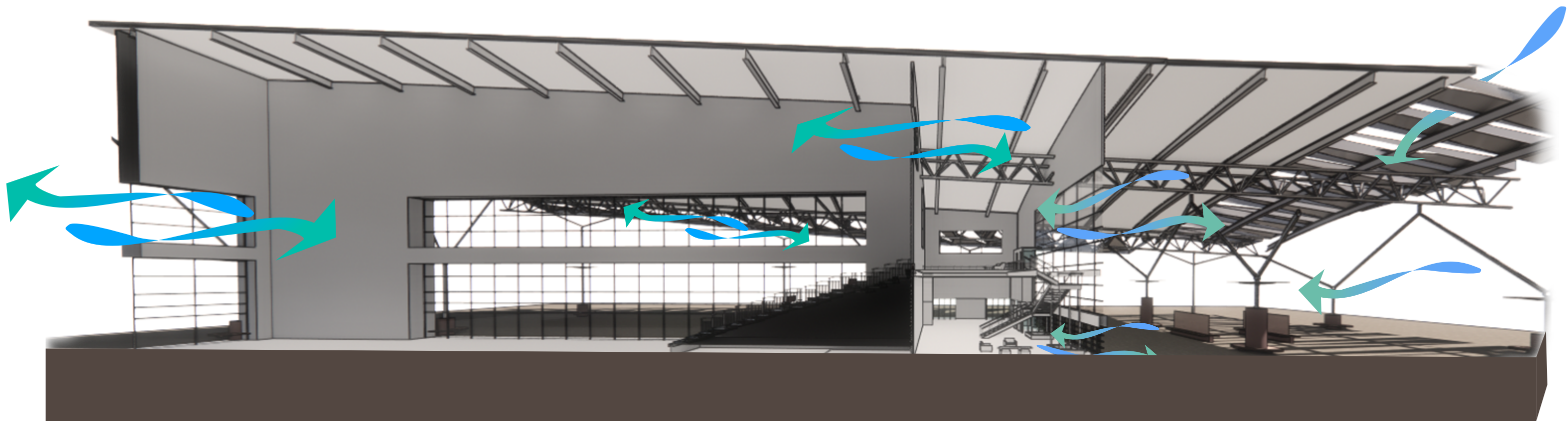


View of Outdoor Stage Area and Secondary Entrances

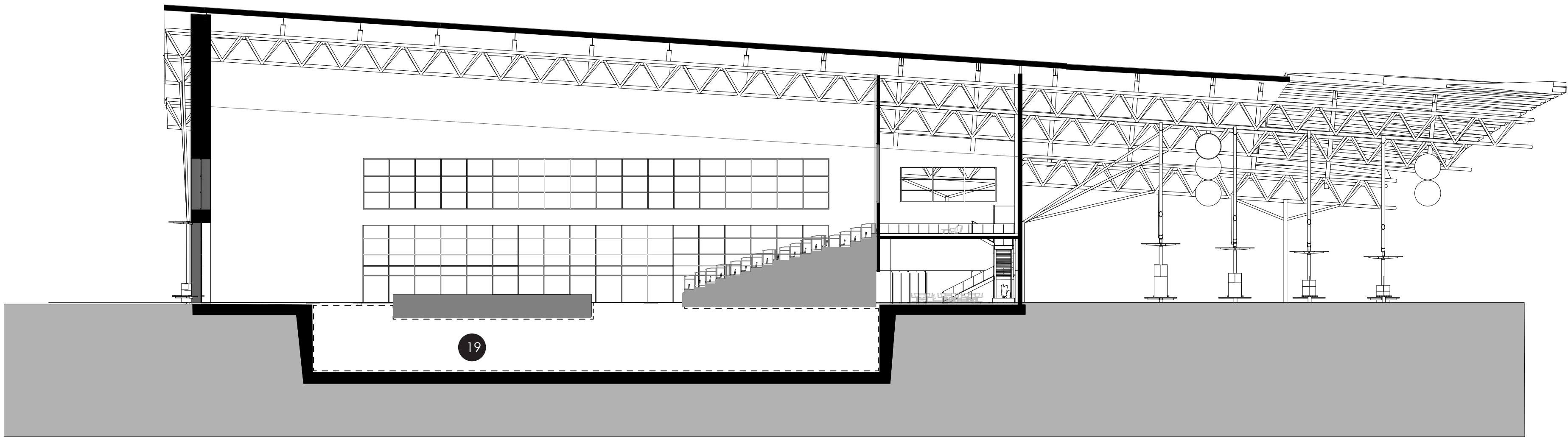
ARCHITECTURAL TYPOLOGIES & ENVIRONMENTAL RESPONSES

Cross Ventilation

- Operable windows
- Glazed wall systems that open to the outside

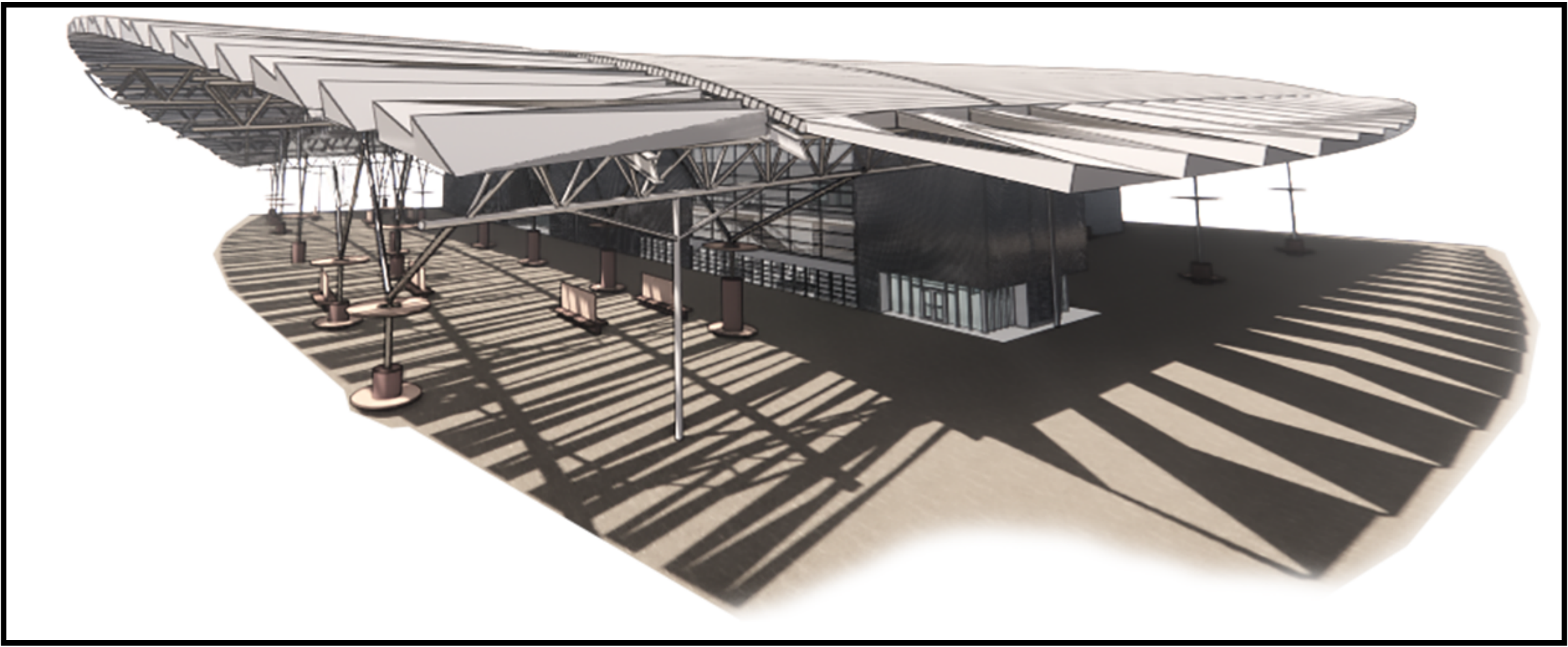
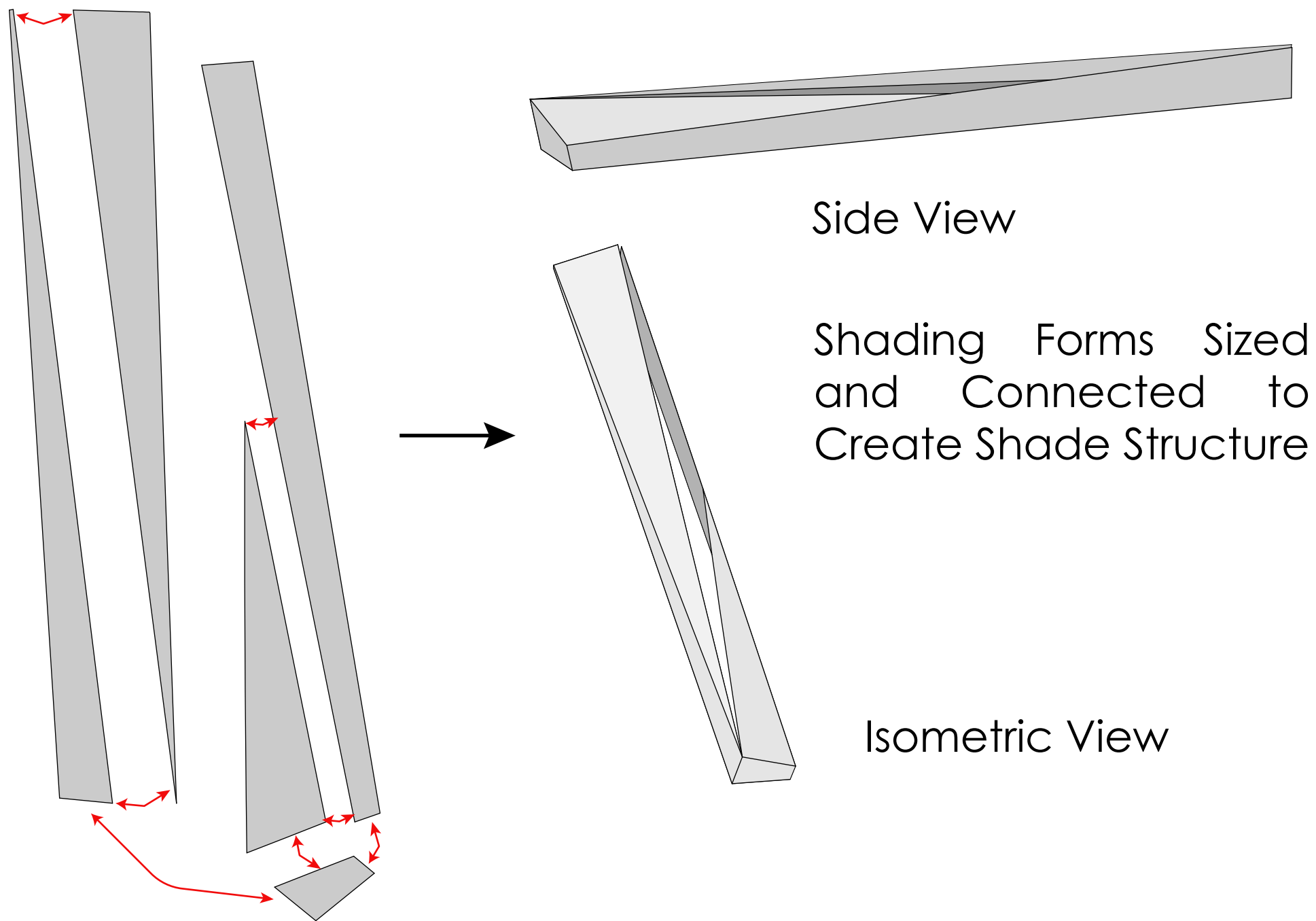


Section A
0 10 20 60

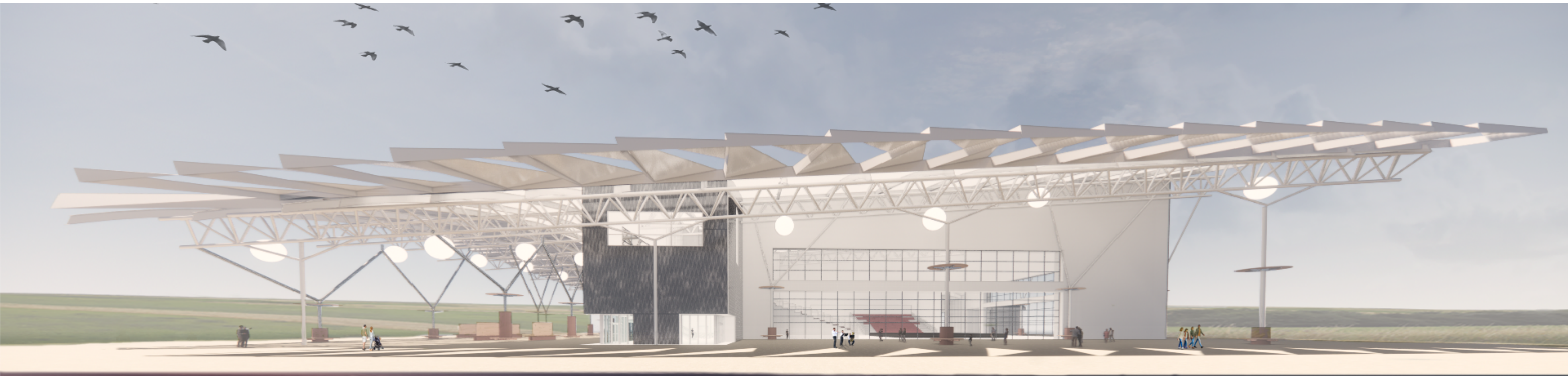


Section B
0 10 20 60

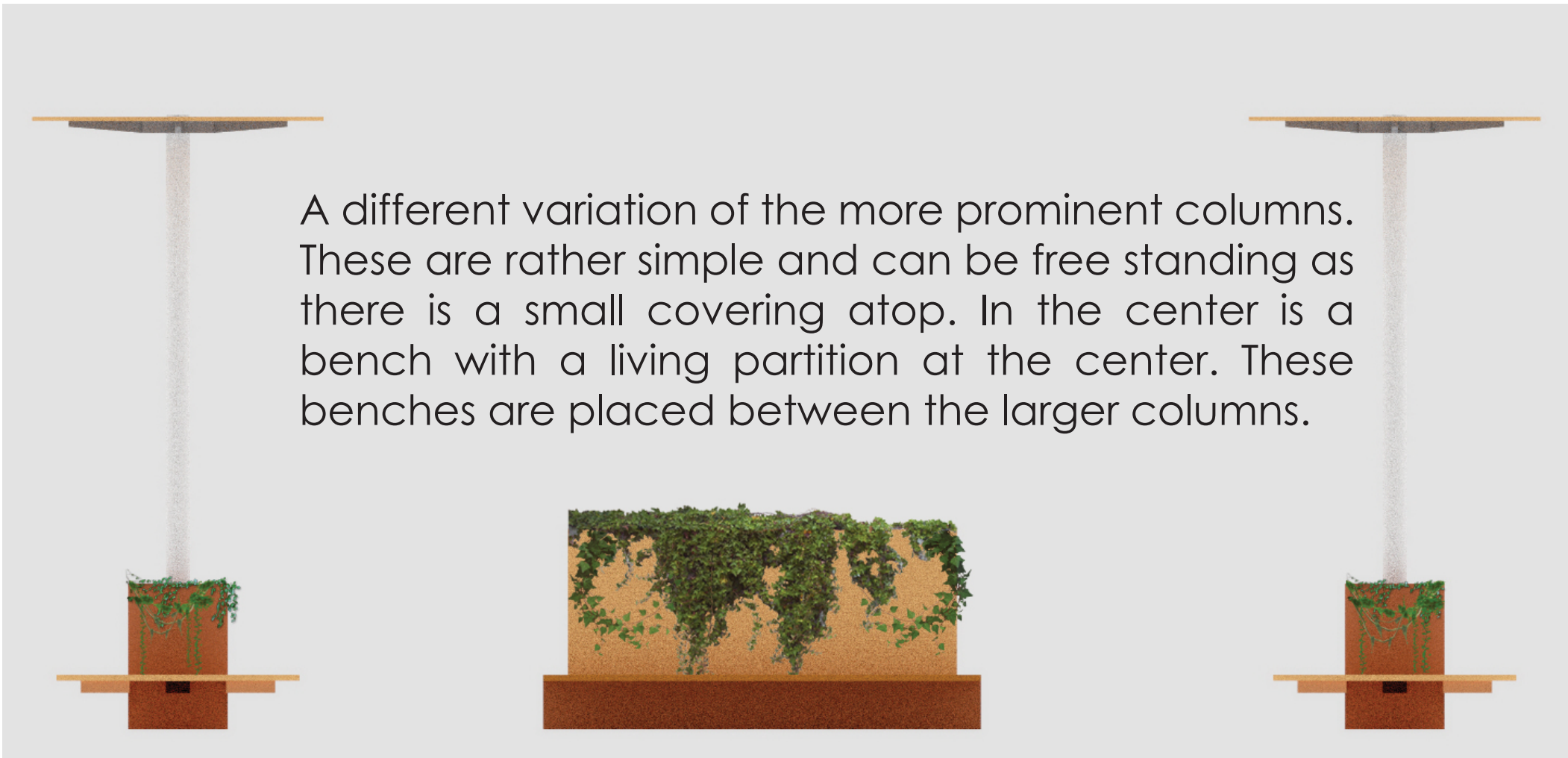
19 Sublevel space that houses Spiralift system that moves stage and seating into place.



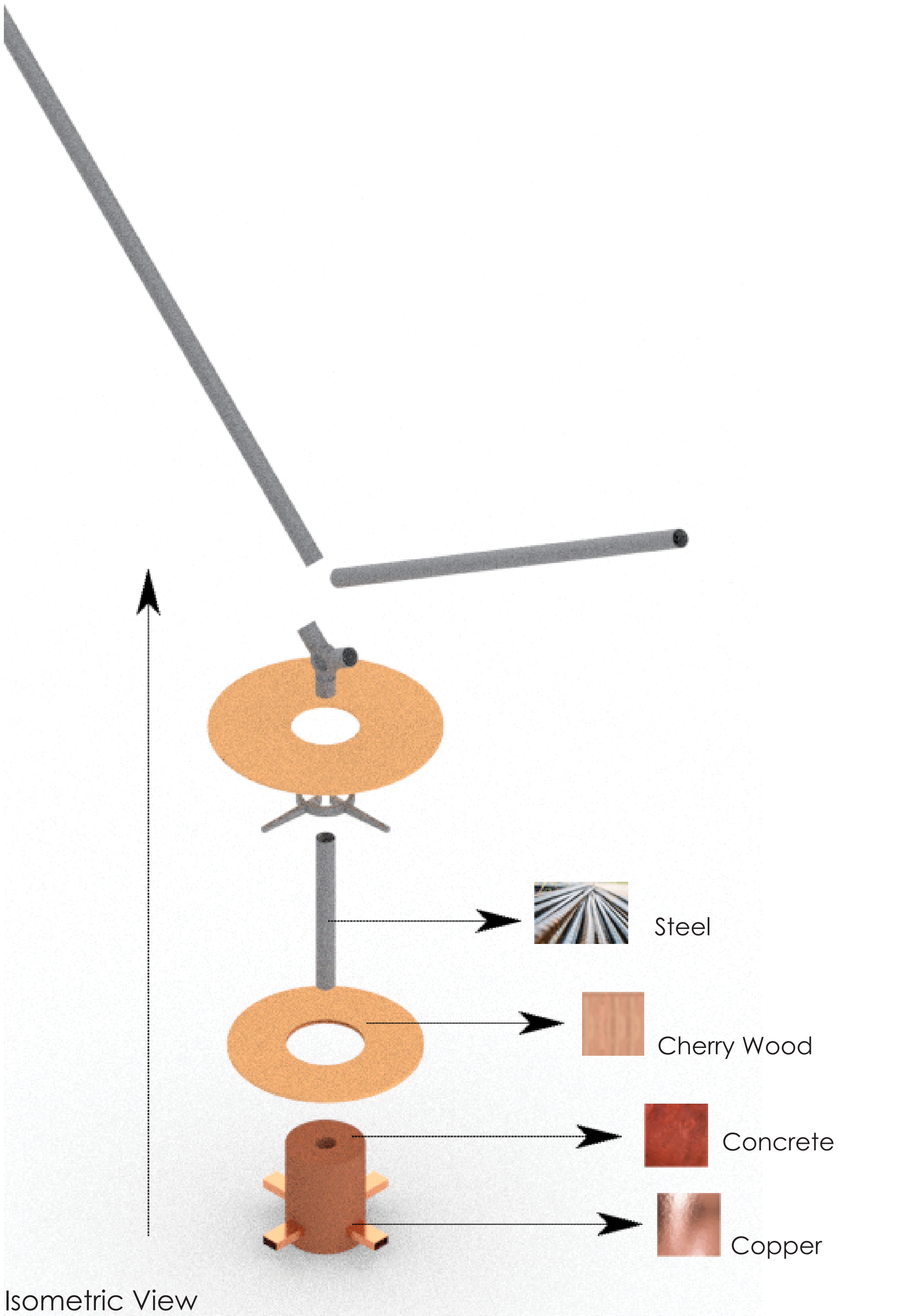
Aluminum Metal Panel Shading Device



View of Outdoor Venue Space, Secondary Entrance and Front Open-Air Lobby



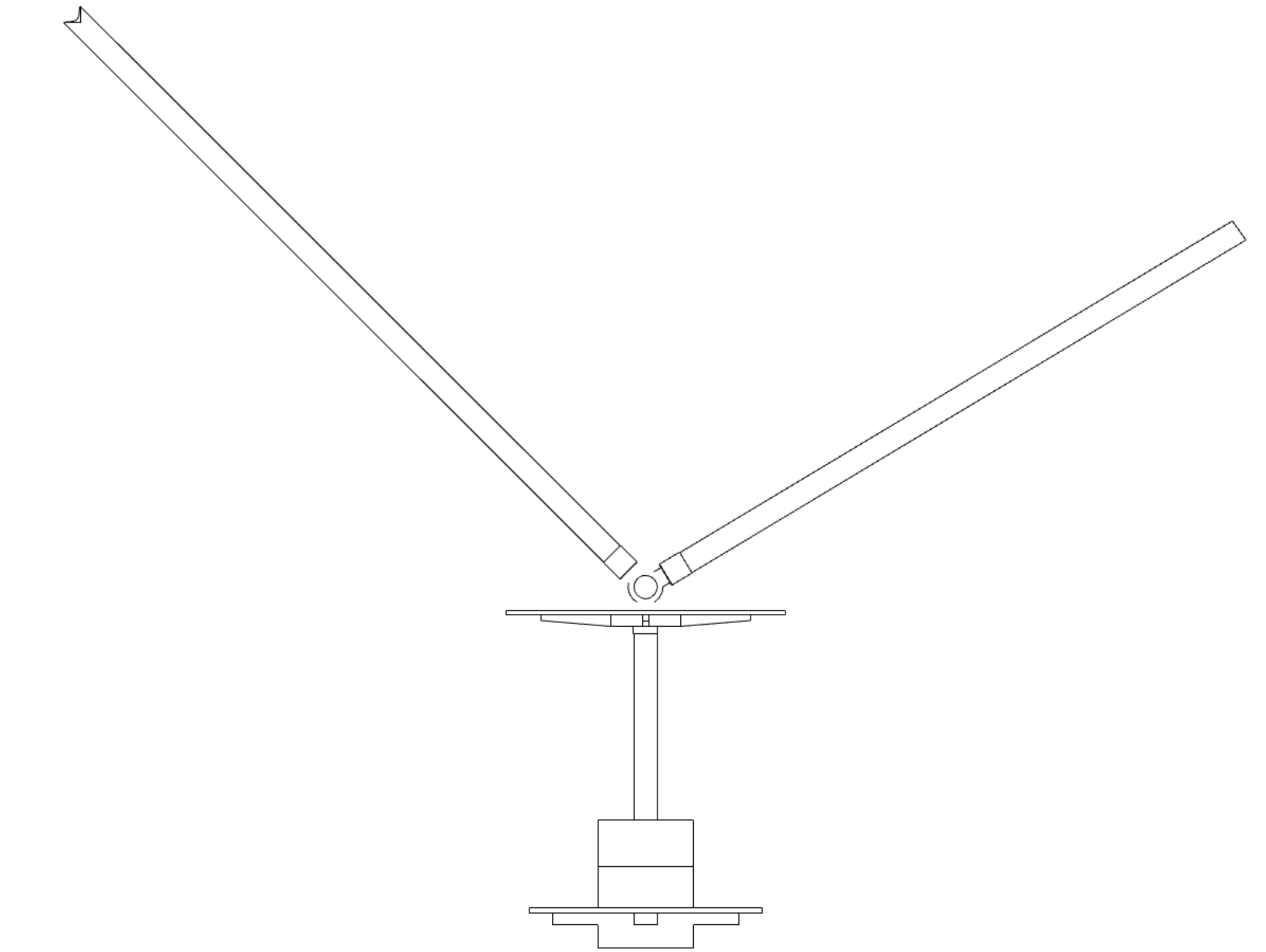
The columns and benches were designed with the idea of social distancing while allowing some groups such as families and friends to sit together.



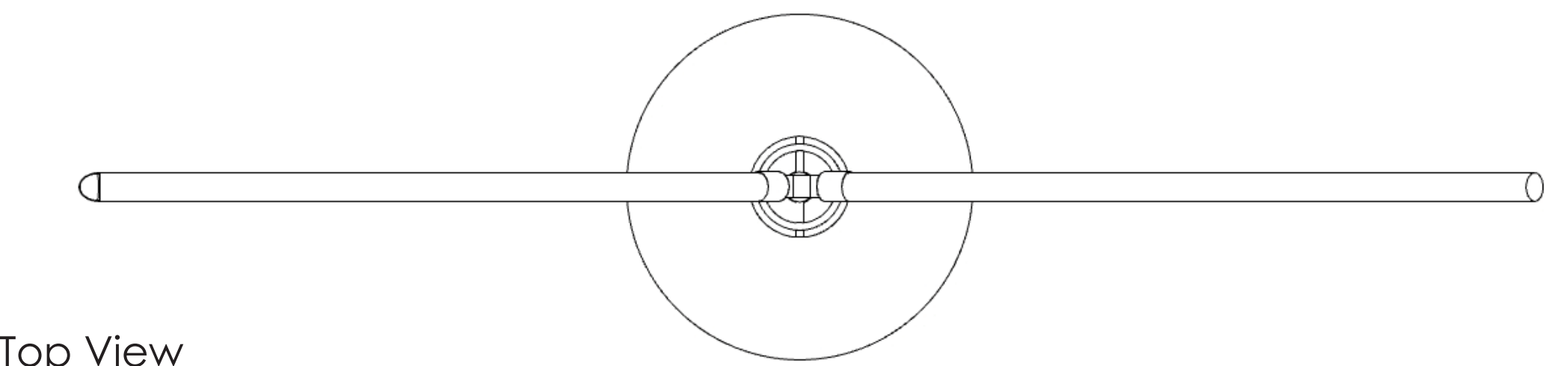
Isometric View



Rendering of the outdoor stage (7)



Column Detail



Top View

The columns are constructed to allow people to sit on them and are made of steel, wood and concrete and copper. The concrete is colored to meld in with the material pallet in addition it offers an interjection of color to what is rather an overall monotone coloring of materials. The wood will give the occupant comfort as wood is seen as a homelike, rich, and warm material. The steel makes up most of the support material, the steel pipes are a foot thick. A concrete footing lies at the base of the column.



Rendering of the Open Air Lobby (2) on site plan