

INTERDISCIPLINARY PROJECT (PANDEMIC)

BY GROUP 12 (AMINA ALOBAIDLI, ERIN RAMIREZ, DEVON ROMO)

CONCEPT STATEMENT

AS HUMAN BEINGS WE MUST BE FLEXIBLE IN ORDER TO ADAPT TO THIS SUDDEN CHANGE THAT HAS BEEN BROUGHT ON BY COVID 19. THE EMOTIONS BROUGHT ON BY THIS ON GOING REALITY ARE REFLECTED IN THE DESIGN OF THIS PERFORMANCE SPACE. THE SHAPE AND MATERIALS ARE SHOWN IN RELATION TO HOW EMOTIONS CONSTANTLY CHANGE. BOTH INDOOR AND OUTDOOR SPACE SERVE THE USERS. INDOOR SPACE RESEMBLING ISOLATION AND THE OUTDOOR SPACE REPRESENTING FREEDOM.

TOPICS

(SUDDEN CHANGE): EMOTIONS IN SUCH A SUDDEN SHIFT THAT HAS AFFECTED EVERYONE. HOW IT HAS AFFECTED US MENTALLY IN OUR EVERYDAY LIVES.

(ADAPTABILITY): HOW WE OVERCOME SUCH OBSTACLES SUCH AS CHANGE. HOW WE REACT. ADAPTATION TO THE INTERNET IN MEANS OF INTERACTION, INSTEAD OF IN PERSON.

(FLEXIBILITY): HOW WE STRETCH OURSELVES TO MOLD TO THIS NEW WAY OF LIFE. IN TERMS OF SPACE IT'S TO ACCOMMODATE FOR DIFFERENT TYPES OF PERFORMANCES. WE MUST BE FLEXIBLE IN ORDER TO ADAPT.

DESIGN INTENTIONS

(COLOR): BASED ON EMOTION

(LIGHTING): DIFFERENT COLOR LIGHTS REFLECT EMOTION. HOW DIM OR BRIGHT A SPACE IS CAN RELATE TO EMOTION AS WELL. MOOD LIGHTING IS IGNITING OR ILLUMINATION, DESIGNED TO CREATE A TEMPORARY STATE OF MIND OR FEELING.

(MATERIALS): TEXTURE AND COLOR OF MATERIALS.

(ACOUSTICS): ISOLATION OF NOISE FOR THE AUDIENCE. AMPLIFICATION OF NOISE.

(SIZE & SHAPE): SIZE CAN BRING PEOPLE TOGETHER OR ALLOW FOR SEPARATION. SHAPE CAN RESEMBLE THE PANDEMIC'S SUDDEN SHIFT AND FEELINGS TOWARDS IT.

(INDOOR/OUTDOOR): INDOOR CAN REPRESENT ISOLATION AND OUTDOOR CAN REPRESENT FREEDOM.

MASKS (MEANING)

MASK RELATING TO EMOTIONS

- MASKS CAN REPRESENT SO MANY THINGS; EMOTIONS GOOD, BAD, FEAR LOVE AND POWER.

- ANCIENT GREEK ACTORS USED COMEDY AND TRAGEDY MASKS TO DEPICT EMOTIONS CLEARLY TO THE ENTIRE AUDIENCE FROM THE STAGE. THESE 2 MASKS ARE PAIRED TOGETHER TO SHOW THE 2 EXTREMES OF THE HUMAN PSYCHE. THE 2 MASKS ARE NOW USED AS THE SYMBOL FOR THEATER, IN OF ITS ORIGINS IN ANCIENT GREECE.

THE COMEDY MASK IS KNOWN AS **THALIA**, WHO IN GREEK MYTHOLOGY IS THE MUSE OF COMEDY AND IDYLIC POETRY, PORTRAYED AS A HAPPY, CHEERFUL YOUNG WOMAN CROWNED WITH IVY. THE TRAGEDY MASK IS KNOWN AS **MELPOMENE**, WHO IS THE MUSE OF TRAGEDY. MELPOMENE IS DEPICTED WITH THE TRAGEDY MASK IN ONE HAND, AND A KNIFE OR A CLUB IN THE OTHER.



MASKS (TRANSPARENCY & EMOTION)

(SLIPKNOT) COREY TAYLOR MASK INTENTION



SLIPKNOT IS A 9 MEMBER BAND THAT PERFORM WEARING MASKS. THEY ALL WEAR DIFFERENT MASKS AND FOR EVERY ALBUM (6), THEY CHANGE THE DESIGN OF THEIR MASKS. LEAD SINGER COREY TAYLOR IS SHOWN ABOVE IN HIS MOST UP TO DATE MASK. WHAT MAKES THIS MASK SO SPECIAL IS THAT IT IS A WAY FOR COREY TO EXPRESS EMOTION EVERY PERFORMANCE. HE PAINTS HIS FACE HOWEVER HE FEELS BEFORE HE PERFORMS AND COVERS IT WITH THIS TRANSLUCENT MASK. THIS GIVES OFF A DIFFERENT EFFECT THAT FEELS Eerie AND COULD REFLECT HOWEVER HE FEELS.

MASKS (MASKING THE PERFORMANCE SPACE)

TRANSLUCENT SKIN WITH LIGHTING

- THE PERFORMANCE SPACE IS TO BE COVERED IN A TRANSLUCENT EXTERIOR MATERIAL.
- LIGHTS WILL ALSO PLAY A PART IN THE EXTERIOR APPEARANCE. DIFFERENT COLORS OF LIGHT SHINING FROM THE INSIDE OUT WILL CONSTANTLY CHANGE THE APPEARANCE OF THE BUILDING. THE DIFFERENT COLORS WILL SERVE TO CHANGE HOW THE USER FEELS AND SET THE MOOD FOR A PERFORMANCE HELD AT ANY CERTAIN TIME. PROJECTIONS OF PERFORMANCE TITLES CAN ALSO BE SHOWN ON THIS TRANSLUCENT SKIN.

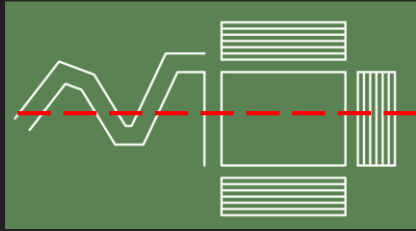
SOGOKAGU PAVILLION BY KENGO KUMA



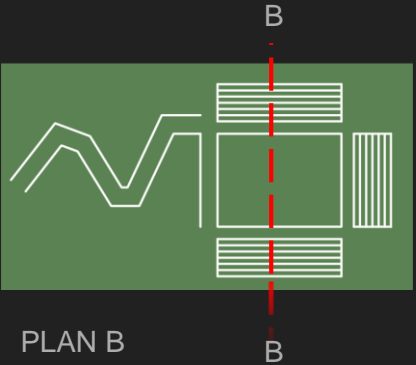
PLASENCIA AUDITORIUM AND CONGRESS CENTRE



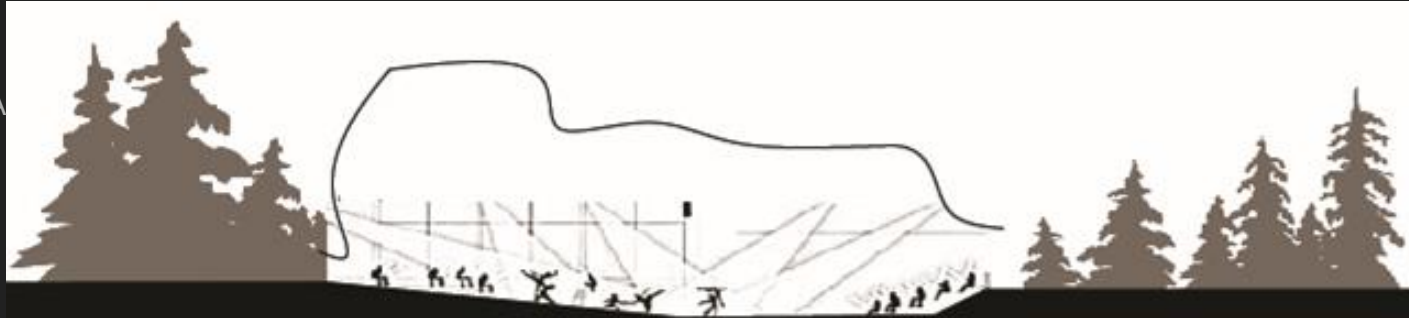
DIAGRAMS (SECTIONS & PERFORMANCE TYPE)



PLAN A



PLAN B



SECTION A-A



SECTION B-B

DIAGRAMS (PLANS & PERFORMANCE TYPE)

